

Cone Beam 3-D Dental Imaging System



The Leader in Cone Beam 3-D Dental Imaging Introduces the Most Complete 3-D Imaging System for Quicker and More Comprehensive Diagnostic Treatment Planning

Building on i-CAT®'s unparalleled, 3-D imaging technology - the Next Generation i-CAT® offers a new ergonomic design, groundbreaking performance advancements and a wealth of new and improved features.

i-CAT® Features

Functionality	Easy-to-operate push button controls
Low Radiation Dose*	Best image quality with less radiation to the patient Less than ½ the dose of a full mouth series NEW low dose settings for follow-up scans and children 36 - 74 µSv
Sensor Technology	Amorphous Silicon Flat Panel Sensor 16,384 shades of gray Best signal to noise ratio for clearer images Optional Extended Field of View with adjustable sensor to capture: - Landscape: Full resolution and detail obtained for smaller fields of view - Portrait: Captures Extended Field of View data
Software	Streamlined for Dental Workflow Free i-CATVision™ for unlimited networking and sharing DICOM 3 compatible output for sharing with third party applications Automatic Pan and Ceph reconstruction NEW practice management interface available with a growing list of providers DICOM functionality/PACS interface Automatic nerve canal estimation
Reporting	Available in i-CATVision™
Design	New clean design for aesthetics and ergonomics Sturdy and stable chair/head support mechanism - reduces patient movement and optimizes image quality Small in-office footprint
Support	Superior Customer Support – Technicians, Training, Marketing and Strongest R&D

*Based on ICRP publication 60: Recommendations of the ICRP

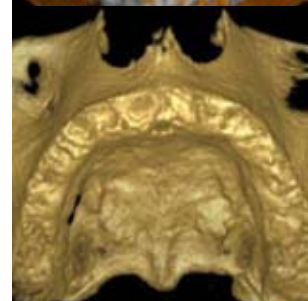
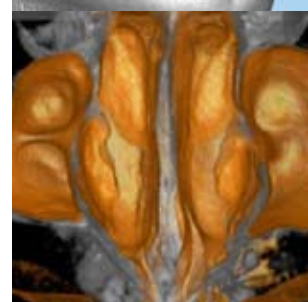


The Leader in Cone Beam 3-D
Dental Imaging

i-CAT Specifications

Sensor Type	Flat panel 20 cm x 25 cm
Grayscale Resolution	14 Bit
Voxel Size	.4 mm, .3 mm, .25 mm, .2 mm, .125 mm
Collimation	Automatic
Scan Time	5, 8.9 or 26.9 seconds
Exposure Type	Pulsed
Effective Dose*	36 - 74 μ Sv
Field of View	Standard Scan: 4, 6, 8, 10, 13 cm height 16 cm diameter Extended Field of View: (Cephalometric): 17 cm height 23 cm diameter
Reconstruction Shape	Cylinder
Typical Reconstruction Time	Less than 30 seconds
Typical File Size	Less than 50 MB
Sharing Software	Included
Unit Size	48" (w) x 69.5" (h) x 36.37" (d)

*Based on ICRP publication 60: Recommendations of the ICRP



NEW Adjustable sensor orientation allows capture of both:

- PORTRAIT: Captures Extended Field of View (cephalometric) data with less radiation to the patient.
- LANDSCAPE: Full resolution and detail obtained for smaller volumes.

To learn more about the Next Generation i-CAT[®] 3-D dental imaging system contact your Henry Schein representative or call Imaging Sciences International at (800) 205-3570.

www.i-CAT.com